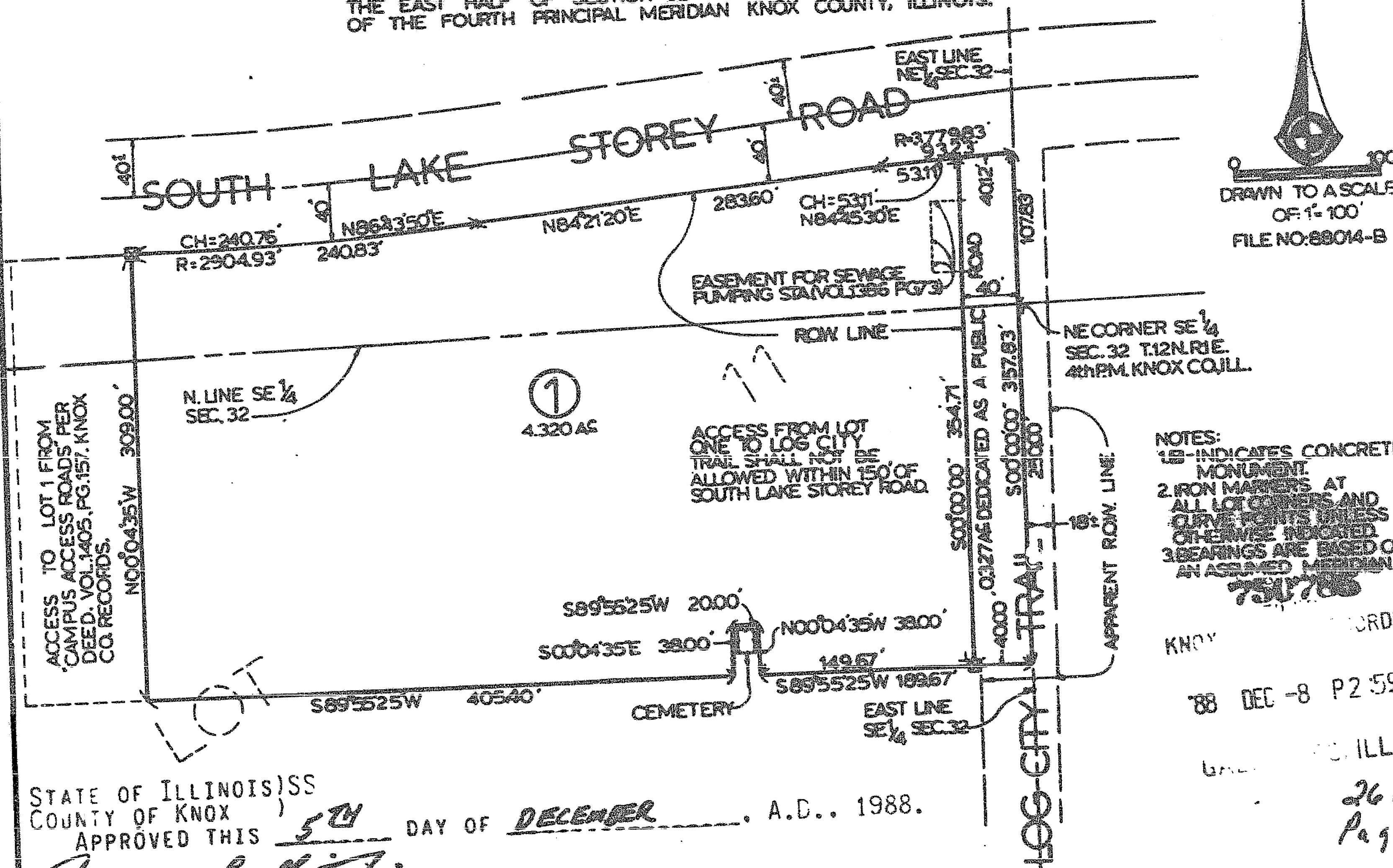


DOCUMENT NO. 750785 Filed for Record in Recorder's Office of Knox County, Illinois on December 8, 1988 at 2:59 O'clock P. M.

GALESBURG LABORATORY SUBDIVISION

BEING A SUBDIVISION OF PART OF LOT 11 IN THE RESUBDIVISION OF THE EAST HALF OF SECTION 32 TOWNSHIP 12 NORTH, RANGE 1 EAST, OF THE FOURTH PRINCIPAL MERIDIAN KNOX COUNTY, ILLINOIS.



STATE OF ILLINOIS)SS
 COUNTY OF KNOX)
 WE, KENNETH E. SCHRADER & ASSOCIATES, LTD., DO HEREBY STATE THAT WE HAVE SURVEYED AND SUBDIVIDED INTO A LOT AND ROADWAY, TO BE KNOWN AS GALESBURG LABORATORY SUBDIVISION, PART OF LOT 11 IN THE RESUBDIVISION OF THE EAST HALF OF SECTION 32, TOWNSHIP 12 NORTH, RANGE 1 EAST OF THE FOURTH PRINCIPAL MERIDIAN, KNOX COUNTY, ILLINOIS, AND THAT THE ACCOMPANYING PLAT IS A TRUE AND CORRECT REPRESENTATION OF SAID SURVEY AND SUBDIVISION AS HEREIN SHOWN AND DRAWN TO A SCALE OF ONE INCH EQUALS ONE HUNDRED FEET.

NO SPECIAL FLOOD HAZARD AREA HAS BEEN IDENTIFIED BY THE FEDERAL EMERGENCY MANAGEMENT AGENCY FOR THE PROPERTY COVERED BY THIS PLAT.
 DATED THIS 2ND DAY OF DECEMBER, A.D. 1988.
 BY KENNETH E. SCHRADER & ASSOCIATES, LTD.
 SURVEYORS AND ENGINEERS
 ILLINOIS LAND SURVEYOR #1701

STATE OF ILLINOIS)SS
 COUNTY OF KNOX)
 WE, THE UNDERSIGNED, OWNERS AND PROPRIETORS OF THE LAND DESCRIBED IN THE ACCOMPANYING PLAT AND CERTIFICATES DO HEREBY CERTIFY THAT WE HAVE CAUSED THE SURVEY AND SUBDIVISION TO BE MADE AS SHOWN ON THE ACCOMPANYING PLAT AND ACKNOWLEDGE SAID SURVEY AND SUBDIVISION TO BE CORRECT TO THE BEST OF OUR KNOWLEDGE AND BELIEF.

GALESBURG LABORATORY LIMITED PARTNERSHIP
 BY Lloyd W. Allen, GENERAL PARTNER

STATE OF ILLINOIS)SS
 COUNTY OF KNOX)
 I, THE UNDERSIGNED, A NOTARY PUBLIC IN AND FOR THE COUNTY AND STATE AFORESAID DO HEREBY CERTIFY THAT LLOYD W. ALLEN, GENERAL PARTNER OF GALESBURG LABORATORY LIMITED PARTNERSHIP, PERSONALLY KNOWN TO ME, THE SAME PERSONS WHOSE NAMES ARE SUBSCRIBED TO BE THE FOREGOING INSTRUMENT, APPEARED BEFORE ME THIS DAY IN PERSON AND ACKNOWLEDGED THAT THEY SIGNED THE SAME AS THEIR FREE AND VOLUNTARY ACT AND FOR THE PURPOSES THEREIN SET FORTH. I HAVE RELEASED AND WAIVER OF THE RIGHT TO REVOKE THIS GIVE UNDER MY HAND AND SEAL OF THE COUNTY OF KNOX, ILLINOIS, THIS 29TH DAY OF DECEMBER, 1988.

NOTARY PUBLIC

STATE OF ILLINOIS)SS
 COUNTY OF KNOX)
 APPROVED THIS 5TH DAY OF DECEMBER, A.D., 1988.
 Francis J. ...
 KNOX COUNTY SUPERINTENDENT OF HIGHWAYS

STATE OF ILLINOIS)SS
 COUNTY OF KNOX)
 I, THE UNDERSIGNED, COUNTY CLERK OF KNOX COUNTY, ILLINOIS, DO HEREBY CERTIFY THAT THERE ARE NO DEEDS, MORTGAGES, TAXES, NO UNPAID FORFEITED TAXES, AND NO REDEMPTION SALES AGAINST ANY OF THE PARTS OF THE ANNEXED PLAT.
 GIVE UNDER MY HAND AND SEAL OF THE COUNTY, AT GALESBURG, ILLINOIS, THIS 29TH DAY OF DECEMBER, 1988.
 COUNTY CLERK

STATE OF ILLINOIS)SS
 COUNTY OF KNOX)
 REVIEWED BY THE CITY OF GALESBURG PLANNING COMMISSION THIS 22ND DAY OF November, A.D., 1988.
 BY Paul Perkins, TITLE ENDS SECRETARY
 STATE OF ILLINOIS)SS
 COUNTY OF KNOX)
 APPROVED BY THE CITY OF GALESBURG THIS 29TH DAY OF December, 1988.
 BY Anita L. Carleton, TITLE CLERK

NOTES:
 1. INDICATES CONCRETE MONUMENT
 2. IRON MARKERS AT ALL CORNERS AND CURVE POINTS UNLESS OTHERWISE NOTED
 3. BEARINGS ARE BASED ON AN ASSUMED MERIDIAN
 750785
 ORDER
 KNOX
 '88 DEC -8 P2:59
 ILL.
 26 Plats
 Page 77